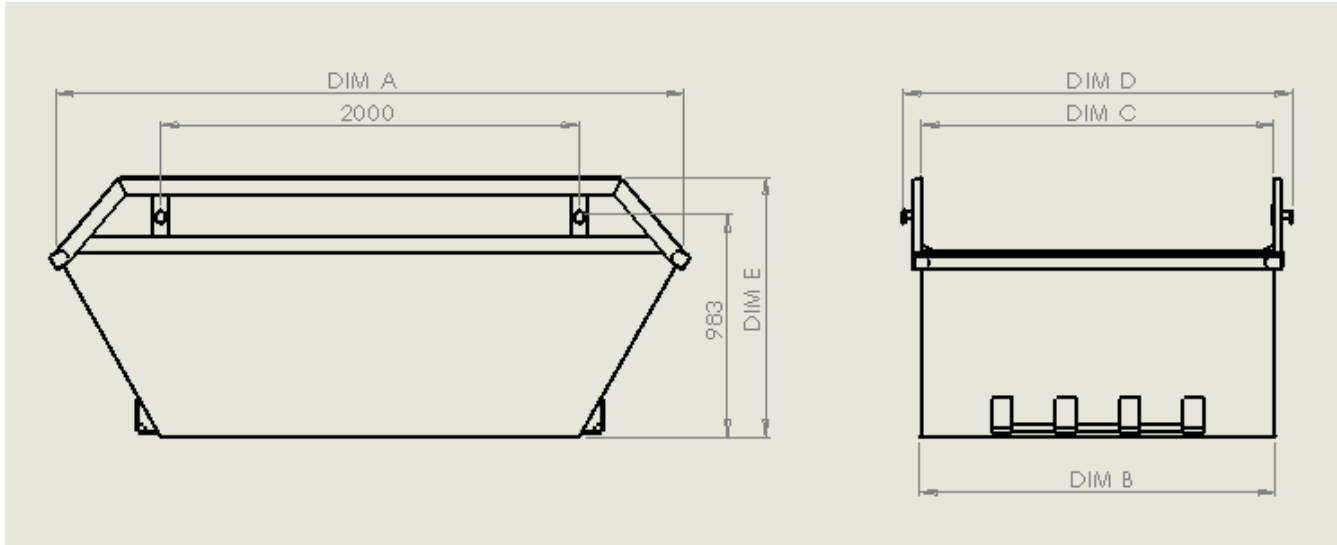


# GENERAL BUILDERS SKIPS RANGE 4 TO 27 CUBIC YARDS CAPACITY

## SKXXCL-GB

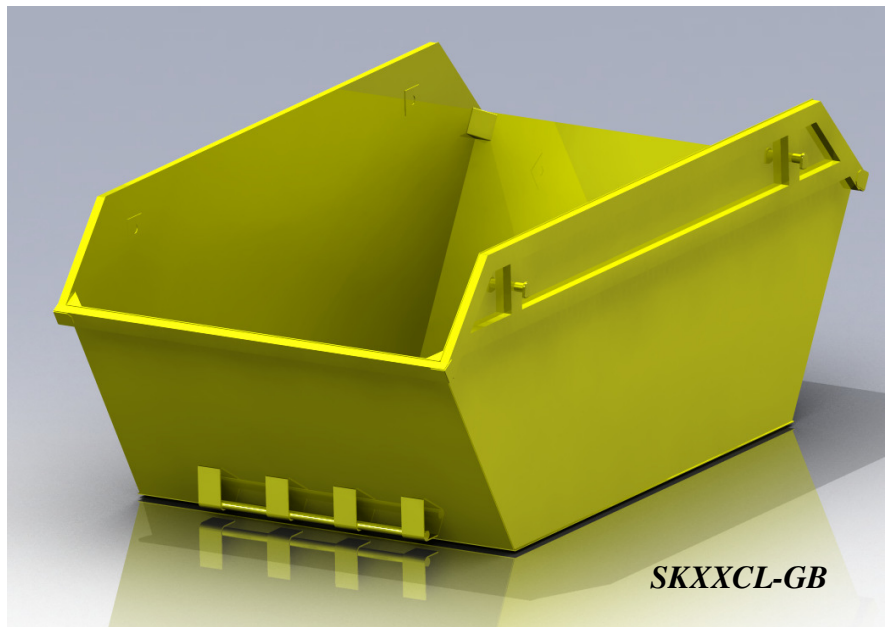
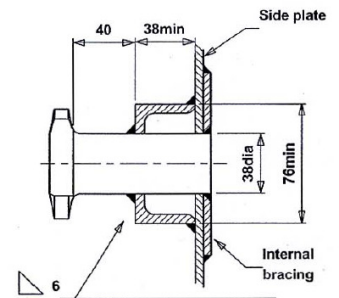


- Constructed to the highest of standards for this type of Skip system.
- Designed using the latest 3D design software.
- Built to last the test of time, in some of the worst conditions.

### CONSTRUCTED TO CHEM STANDARDS, USING QUALITY MATERIALS

- 4 MM MILD STEEL FLOOR
- 3 MM MILD STEEL SIDE SKINS
- 3 MM TAIL SKIN
- TIP HOOK LOCKING
- FORGED LIFTING LUGS
- RSC TOP FRAME
- FULLY WELDED CONSTRUCTION
- GUSSETED CORNERS

LIFTING LUGS FULLY WELDED INTO POSITION



Skip Capacity		Corresponding Vehicle G.V.W. Tonnes	
Greater than	Up to and including	From	To
	3 m <sup>3</sup> (4 yd <sup>3</sup> )	3.5	7.5
3 m <sup>3</sup> (4 yd <sup>3</sup> )	9 m <sup>3</sup> (12 yd <sup>3</sup> )	7.5	13
9 m <sup>3</sup> (12 yd <sup>3</sup> )	12 m <sup>3</sup> (16 yd <sup>3</sup> )	13	23
12 m <sup>3</sup> (16 yd <sup>3</sup> )	20 m <sup>3</sup> (27 yd <sup>3</sup> )	26	32

## CONSTRUCTED TO CHEM STANDARDS



North West Tipplers Ltd  
Rockfield Street, Blackburn,  
Tel: 01254 53251—Fax 01254 665015  
Sales mobile: 07975552133  
www.nwtipplers.co.uk

Technical specifications are subject to change without notice

Rev 1, August 2011